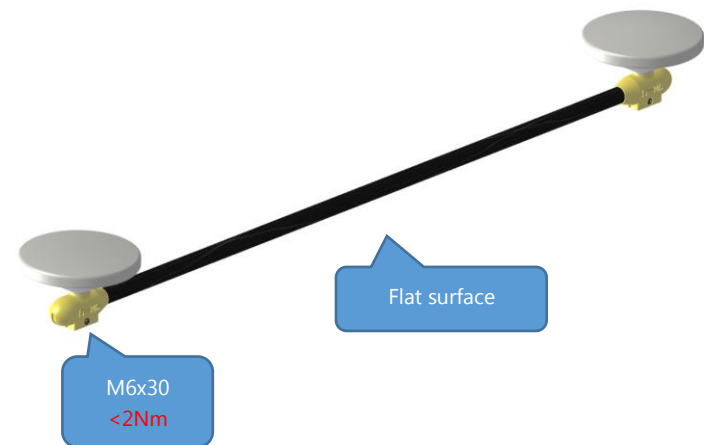
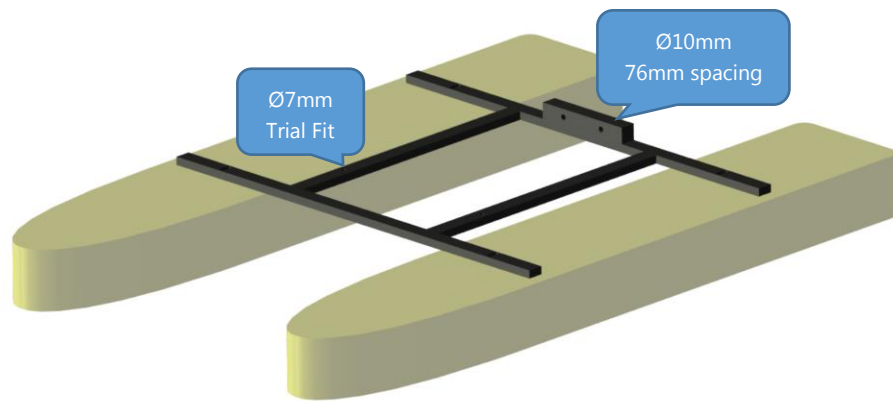


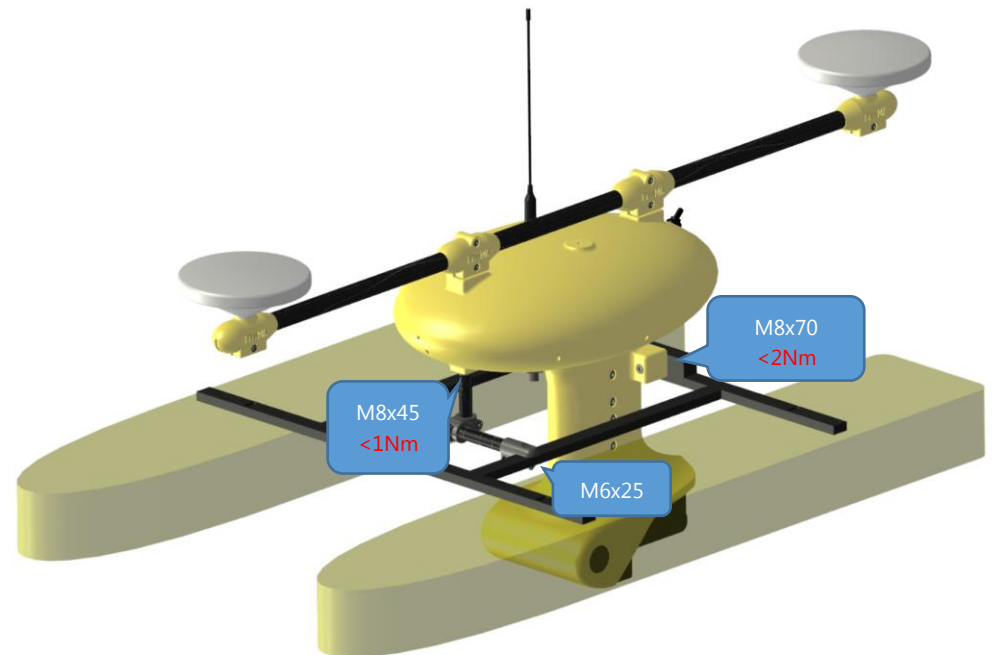
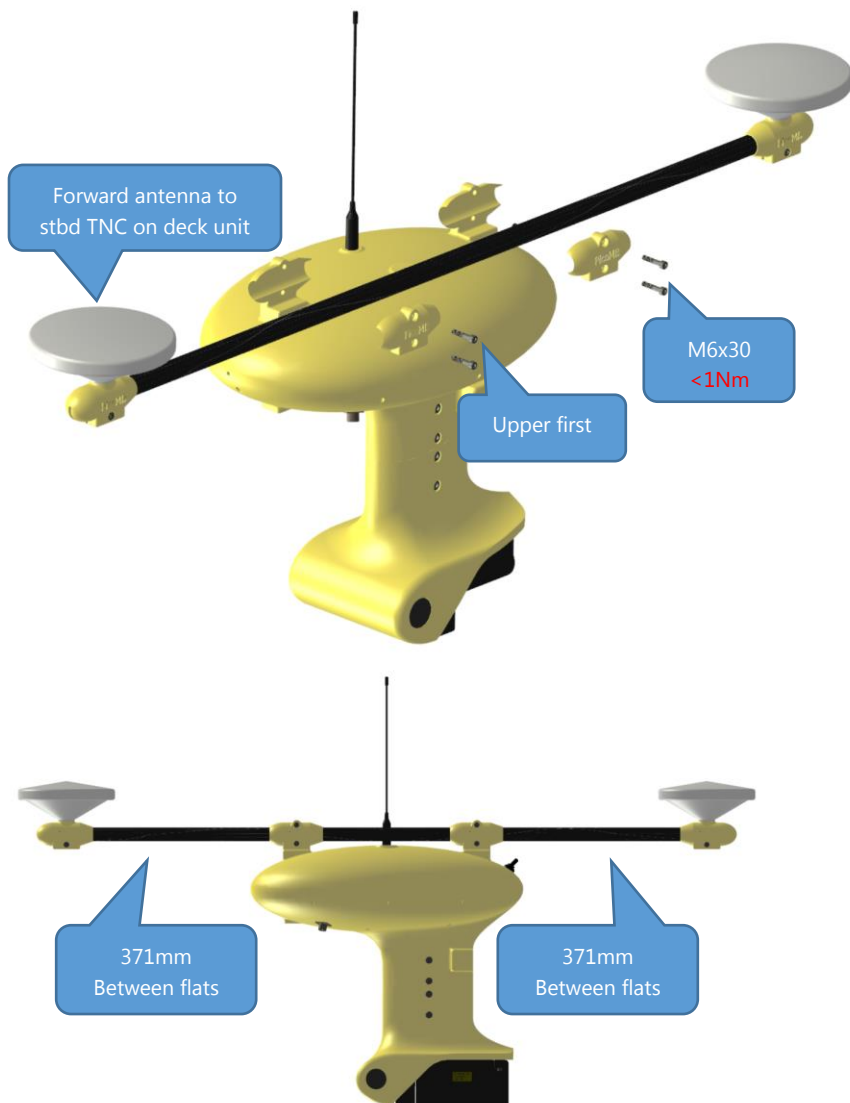
## Installation on small USVs



# PicoPOD



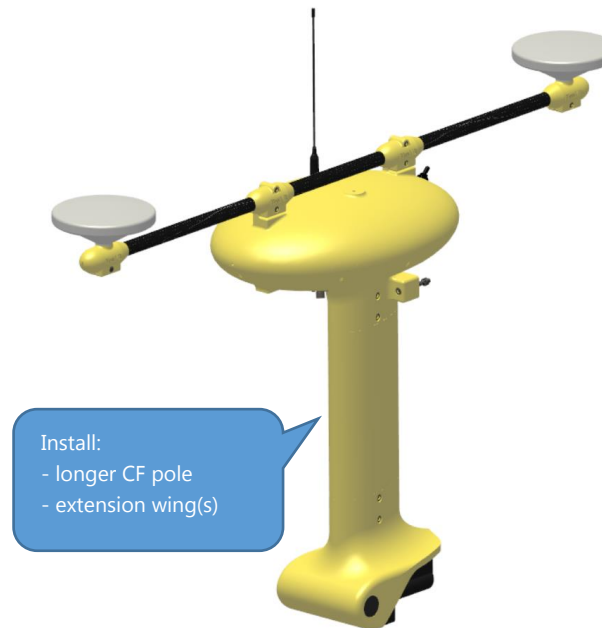
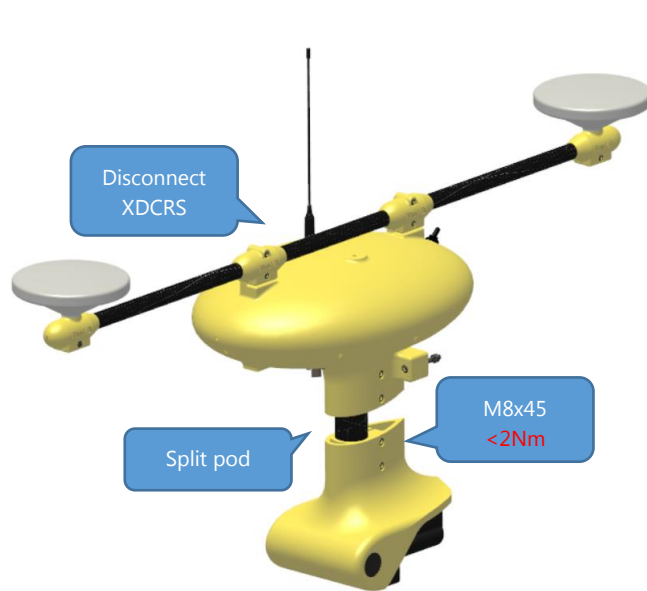
## Installation on small USVs



# PicoPOD



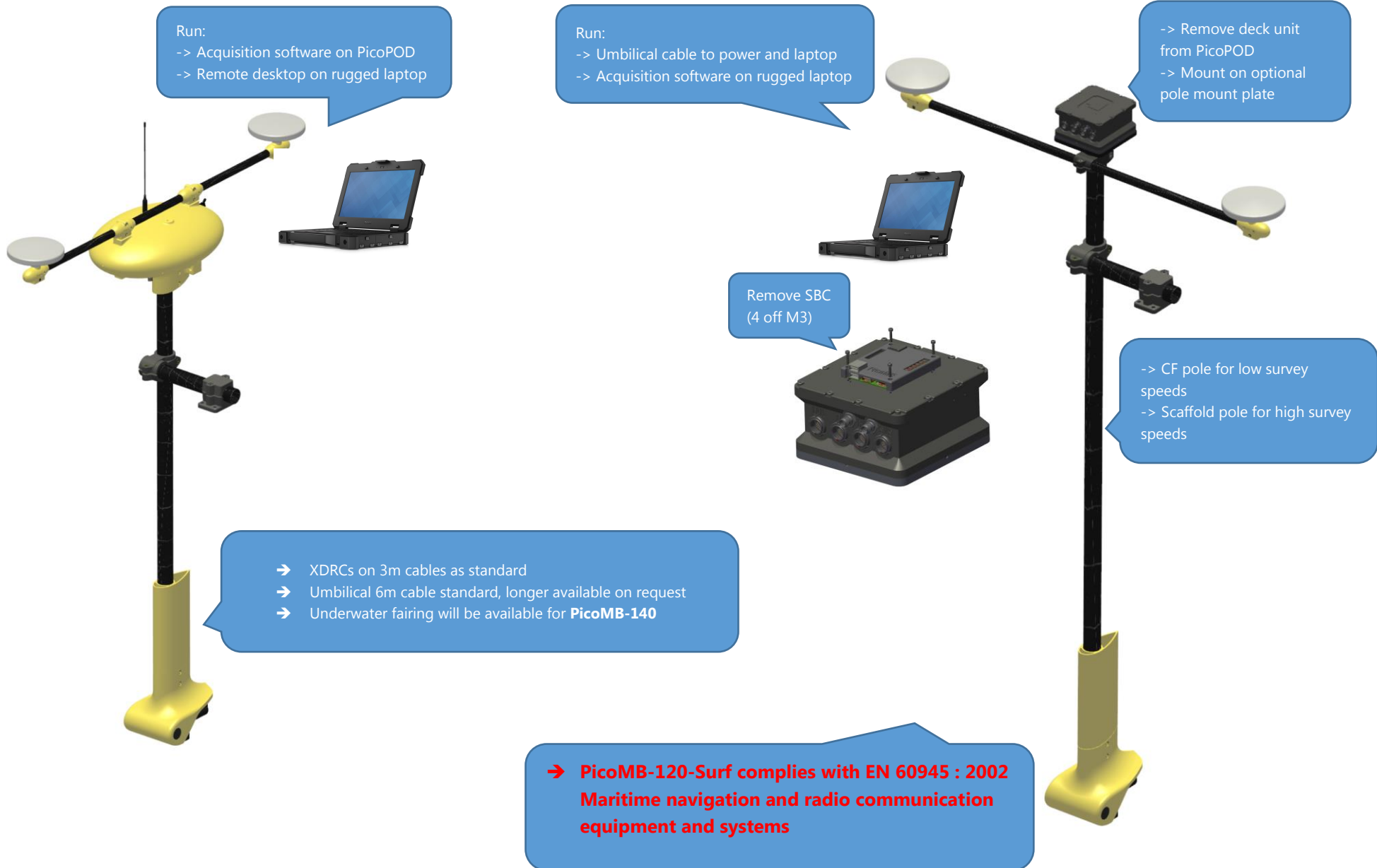
## Installation on larger USVs



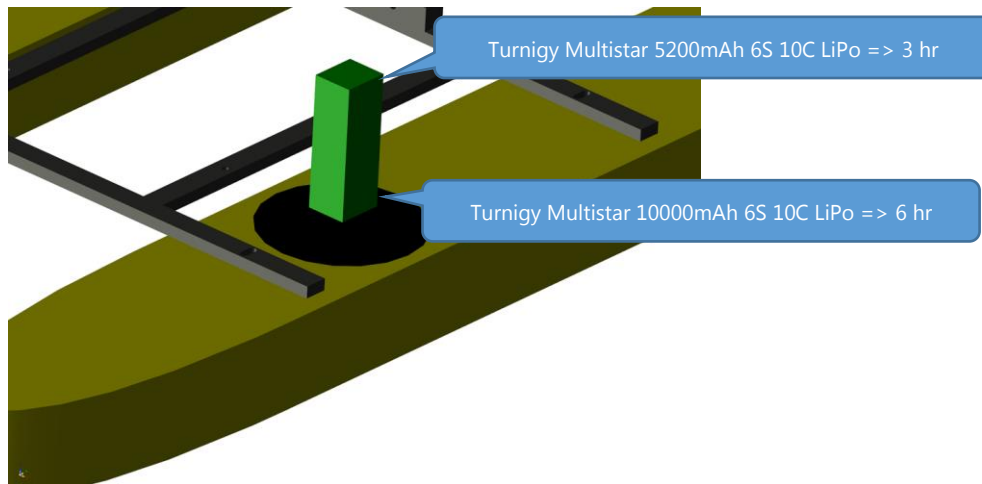
# PicoPOD



## Installation on small survey vessels



## Power

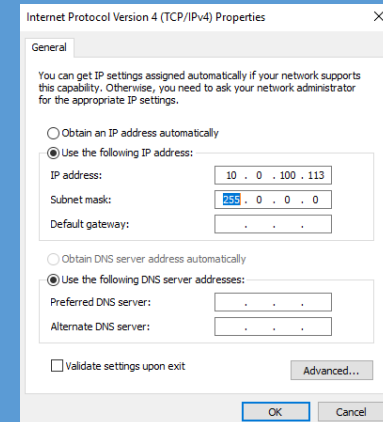
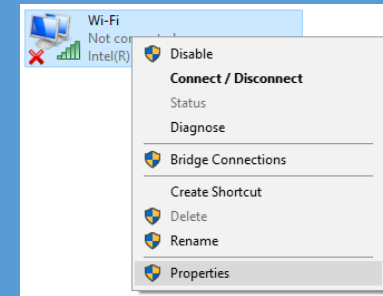
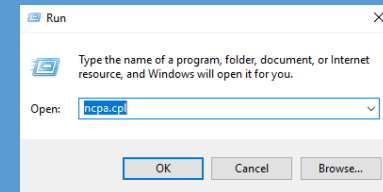


# PicoPOD



## Rugged Laptop

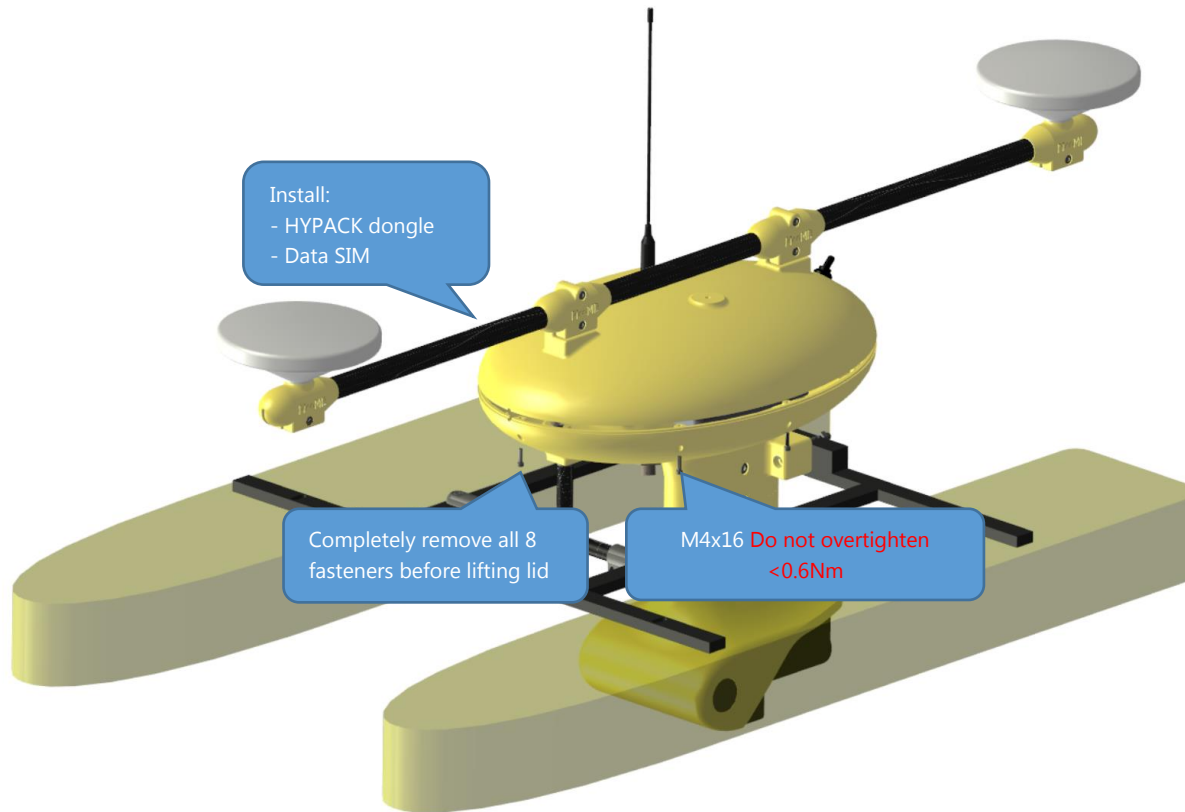
<https://www.tightvnc.com/download.php>



# PicoPOD



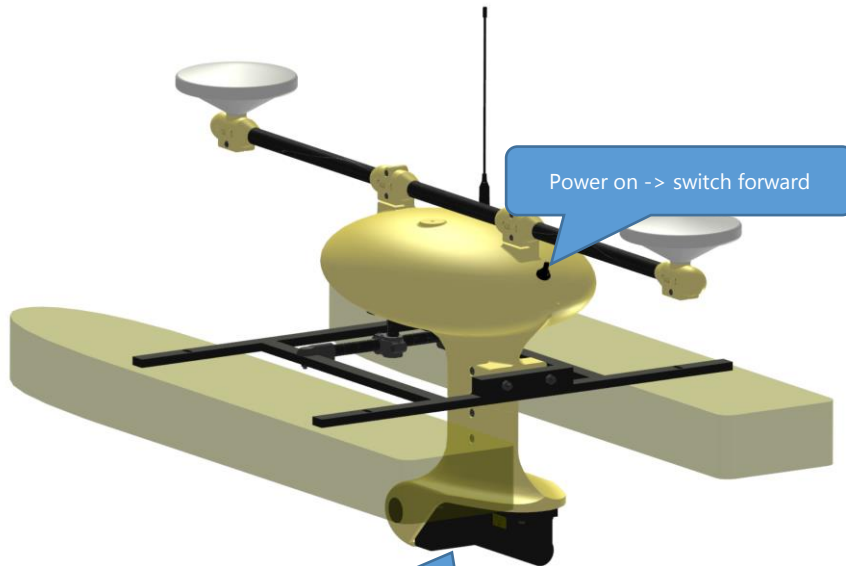
## Preparing to Survey



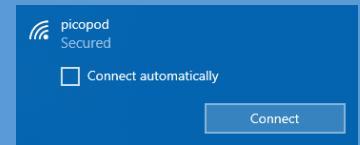
# PicoPOD



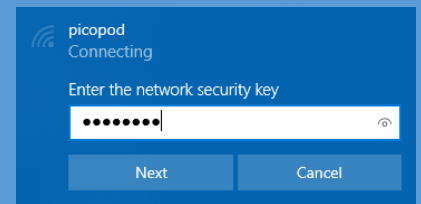
## Running a Survey



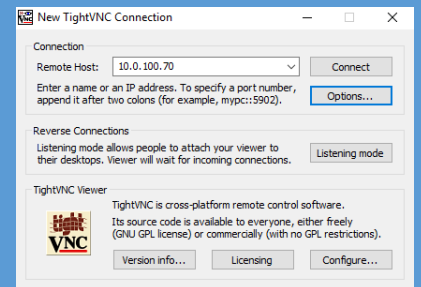
**DO NOT** operate system out of water



→ Connect



→ password



→ Connect



# PicoPOD



## Running a Survey



Copy survey files to laptop

Full-screen  
CTL+ALT+SHFT+F to exit

POSView  
-> connect NTRIP  
-> record POSPac

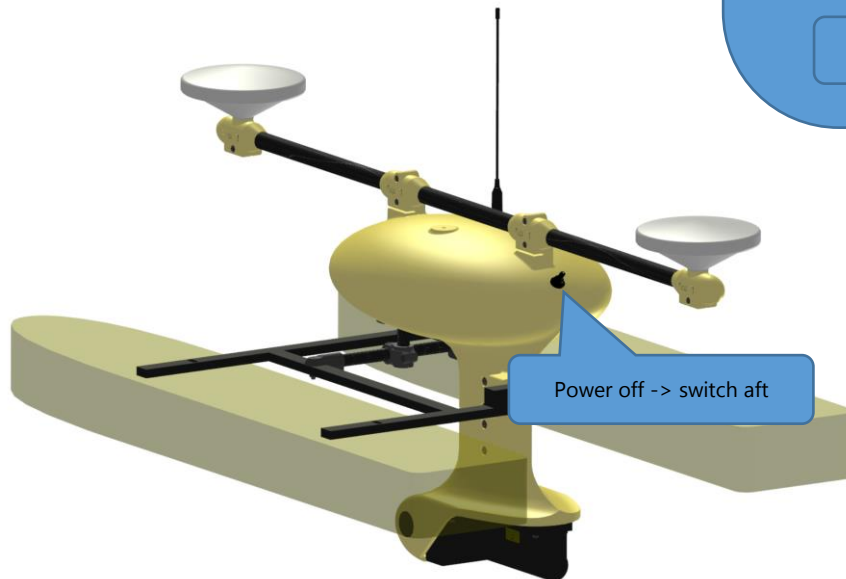
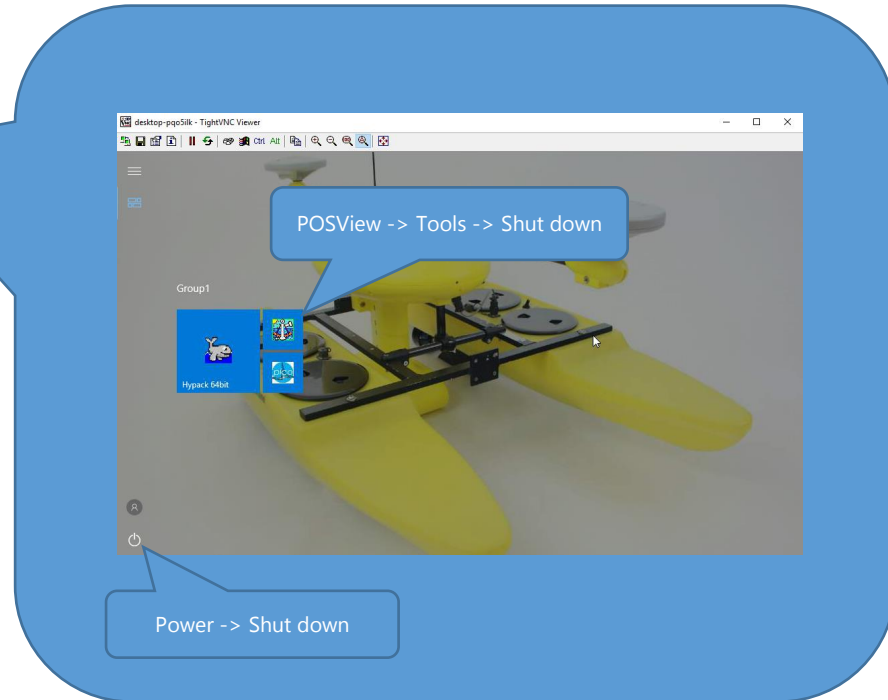
HYPACK  
-> configure MBES  
-> acquire data

Embedded Windows 10 IoT  
➔ DATA OUTSIDE HYPACK PROJECTS FOLDER VOLATILE  
➔ SYSTEM CONFIGURATION LOCKED-DOWN

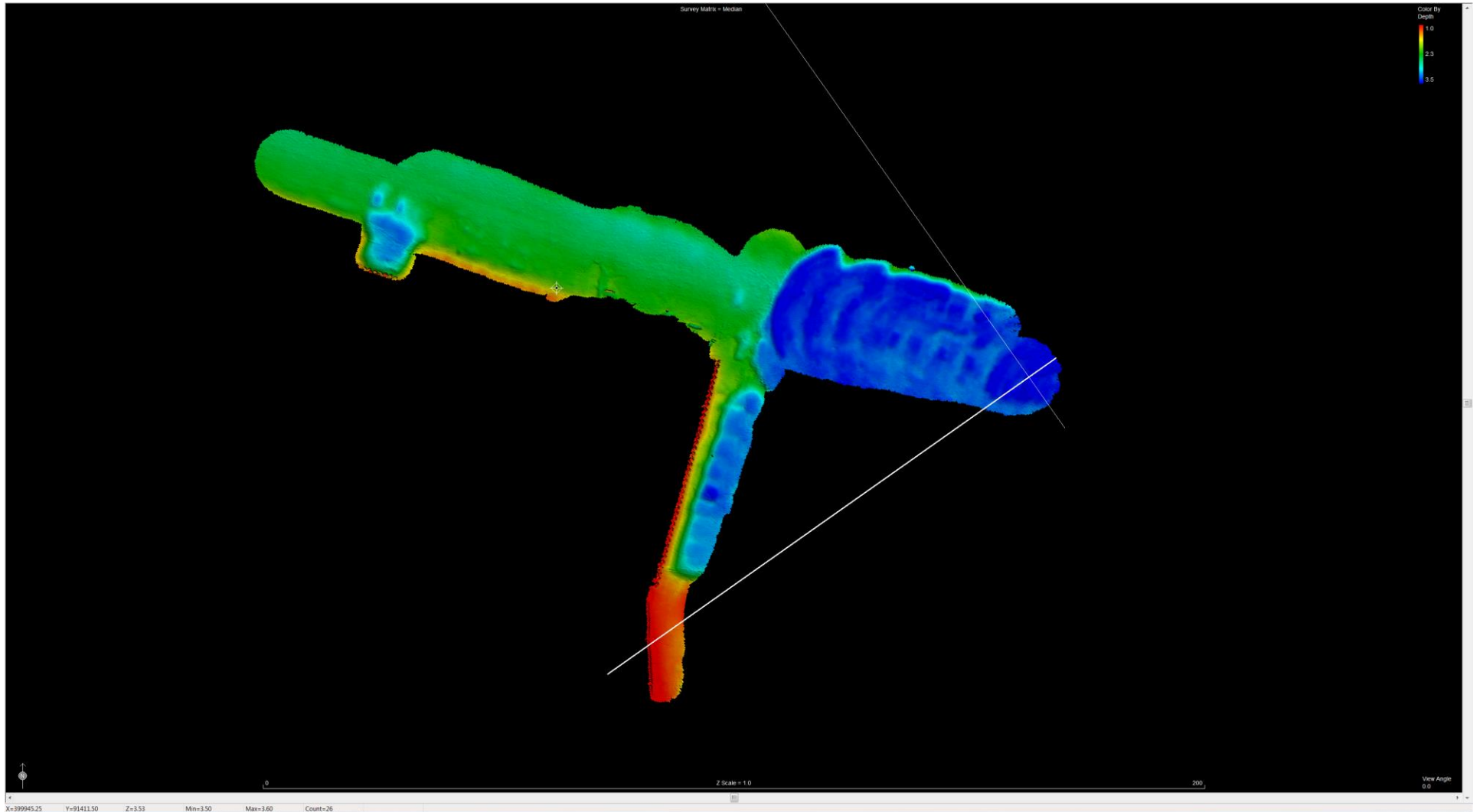
# PicoPOD



## Shutting Down



# PicoPOD



# PicoPOD

